

Access Guide

[Our Services](#) | [Parking](#) | [Main Entrance](#) | [Reception](#) | [Amenities](#) | [Kitchen](#) | [Youth ARC Space](#) | [Gaming Area](#) | [Basketball Area](#) | [Art Gallery](#) | [Art Room](#) | [Band Room](#) | [Music Studio](#) | [Useful Information](#) | [Bookable Spaces and Items](#) | [Safety Information](#) | [Sensory Guide](#)



YOUTH ARTS & RECREATION CENTRE

1 Market Place, Hobart, Tasmania, 7000

[Directions](#)

0438 079 588

youthartsandrec@hobartcity.com.au

[Youth Arts and Recreation website](#)

Hours: Tuesday to Friday 3pm – 6pm (School term). Tuesday to Friday 1pm – 5pm (School holidays).

Our Services

City of Hobart's Youth Arts and Recreation Centre (Youth ARC) is a creative and recreational space for young people aged 12-25 years old to socialise in a safe, inclusive, drug and alcohol-free environment. Programmed workshops run to encourage engagement all year round during Open Access. All equipment is free for use during Open Access. Youth ARC is a parent free space; however, we welcome registered support workers if accompanying a young person.

The City of Hobart provides free “taster sessions” to youth-based organisations at Youth ARC so they can bring groups of young people outside of Open Access hours as an introduction to the City of Hobart Youth Programs. These sessions are available upon request depending on availability by emailing youthartsandrec@hobartcity.com.au

Public Transport Options

Hobart Central bus station is 300 metres from centre.

Parking



Metered street parking is available on Collins Street and Campbell Street.

There are electric vehicle charging stations in Tasmanian Museum and Art Gallery carpark located in Dunn Place.

The area surrounding the City Hall and Youth ARC provides clear pathways with access to wheelchair users.

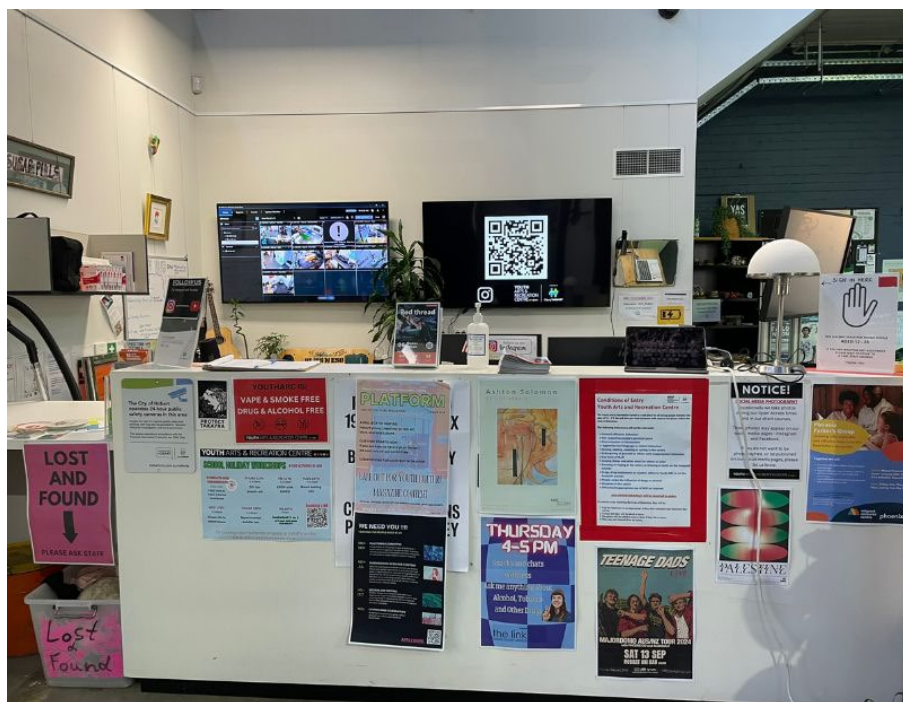
Main Entrance



Step free. Manual door. Pull to open. Clearance 1830mm.

One floor level.

Reception



Staffed - Tuesday to Friday 3pm – 6pm (School term) and 1pm – 5pm (School holidays).

The height of the main reception counter is 1100mm.

Amenities

Accessible Toilet:

Location - Past art room and music rooms, in the back left corner of centre.

One all gender accessible toilet:

Manual door, push to open. Horizontal clearance 895mm

Toilet with left-hand grab bar

Baby change table

Braille signage located near toilet door.

Other Toilets:

Women/girl's toilets in the back left of centre

Men/boy's toilets in the back right of centre.

Braille signage located near toilet doors.

Kitchen



Location – To the left of reception, through the gallery doors.

Clear space to pass through with a 2300mm horizontal width.

The kitchen is used for cooking workshops, getting snacks, self-cooking during Open Access times, and catering for events when the venue is booked.

Inclusions:

- large electric oven
- induction stove and rangehood
- sandwich press
- kettle
- cooking utensils
- bar fridge
- microwave
- dishwasher and three sinks
- washing up consumables
- servery counter with a height of 900mm.

Community groups using kitchen are to bring their own food. Food provisions are available to Youth ARC staff and Open Access participants.

A bar fridge, microwave, kettle and all other electrical appliances are available during hire and Open Access hours.

Youth ARC Space



Location – After the main entrance, at the front of the centre.

Inclusions:

- couches of various sizes with back and armrests and backs
- stackable plastic chairs with no arm rests
- trestle tables
- pool tables
- ¼ basketball court
- table tennis table
- gaming consoles - available during Open Access only (PS5 and SWITCH)
- musical instruments
- music recording room and software
- digital drawing software and equipment
- craft materials.
- Table heights 720mm. Knee clearance 700mm.

Music is played during Open Access hours. The space can sometimes be noisy due to the band room being used or live music being performed on the stage.

Gaming Area



Location – After the main entrance, on the rear right.

Inclusions:

- pool tables x 2
- cues and balls
- table tennis tables.

For use during Open Access hour, this is an area to engage in activities such as playing pool, electronic gaming and table tennis.

An opportunity for young people to meet others in safe space.

Sensory-friendly times can be made available upon request by emailing youthartsandrec@hobartcity.com.

However, a booking of the full venue may be required.

Basketball Area



Location – After the main entrance, to the right.

Inclusions:

- basketball rings
- balls.

This area is used for socialising and engaging in fun activities such as shooting practice, passing drills, solo practice or casual play. It is available during Open Access hours or during whole centre venue bookings.

Art Gallery



Accessible from Collins Street or via main entrance.

Access via Collins Street Entrance

Single stepped access. Manual door. Push to open. Clearance 840mm.

Access via Main Entrance

Manual door. Pull to open. Clearance 1830mm.

Location – After the main entrance, to the left.

The artwork size and type of display changes monthly.

Depending upon the exhibition, the following features may be present:

- roped barriers
- large print or tactile depictions of artist displays
- captioning on film and video screens
- artwork is displayed at various heights.

For further information, please call the centre on 0438 079 588.

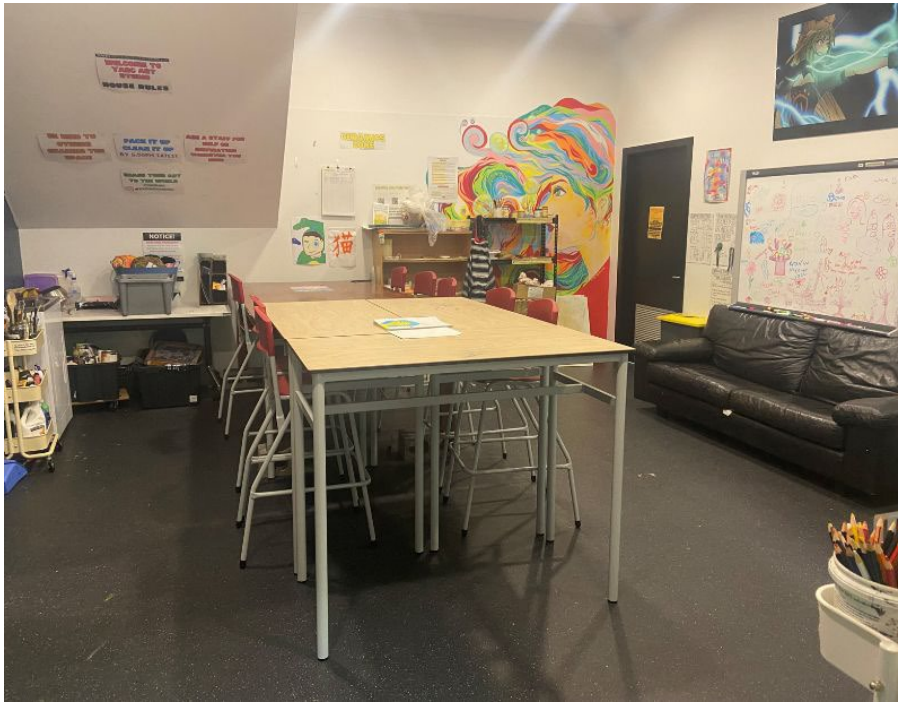
Flash free photography is permitted in the gallery.

Please note, food and drink are not permitted in the gallery.

More information can be found on [website gallery page](#).

The YARC Gallery offers a great opportunity for young artists to showcase their artwork through a public program of visual art exhibitions. Young people can apply to exhibit during our open expression of interest. Visit our [website gallery page](#).

Art Room



Location – After reception, on the rear left.

Manual door. Push to open. Horizontal door clearance 900mm.

Table heights 1000mm. Knee clearance 980mm.

Seating includes computer chairs with backrests, general stackable event chairs and a large 3-seater couch.

Various craft and art materials are available during Open Access times. Inductions can be provided by youth mentors and art officers.

This area is used as a space for young people during Open Access in to engage in creative activities such as art classes, sewing, drawing and painting. It is a great opportunity for young people to meet Youth Workers running the programs in a relaxed, fun environment. Staff are available to guide creative aspirations communicated by participants.

Band Room



Location - Rear left of building

Manual door. Push to open. Horizontal door clearance 760mm.

Inclusions:

- drums
- bass guitar
- acoustic guitar
- keyboards
- microphone
- amplifier.

This space is available during Open Access hours to 12–25-year-old musicians as a rehearsal and band practice space. Instruction is provided by Youth mentors prior to open use during Open Access hours. Recording and production is available to musicians on request. Please email youthartsandrec@hobartcity.com.au

Music Studio



Location - Rear left of building.

Manual door, push to open. Horizontal door clearance 760mm.

Inclusions:

- Computer monitors with FL studio software
- microphone recording equipment.

This area is used as a space for young vocalists and musicians to record. Instruction is provided by Youth mentors. Recording and production is available on request. Inductions must be completed by staff prior to casual use (depending on availability).

Recording and production hire is available to Youth musicians on request. Please email youthartsandrec@hobartcity.com.au

Useful Information

Background music is on during our Open Access hours. It can be turned down on request.

The centre has a busy road near it and infrequent sirens can be heard as well as low to medium traffic noise.

Occasionally, a rescue helicopter lands on the hospital across the road.

Flooring:

- Main activity area - Bitumen/concrete
- Kitchen and art room - Lino
- Music rooms – Carpet.

Our quiet times are Tuesdays between 3pm - 5pm.

Our art room may also serve as a quieter space for individuals to recharge and reset.

Our busiest days are Thursday and Fridays.

Accessible website.

Written materials are available.

Visual communication access board at reception.

We are an inclusive space for all 12-25 y/o and we celebrate diversity.

City of Hobart public Wi-Fi available across the entire CBD. Log in is automatic when selected on device.

Charging facilities for personal devices are available at reception. These include cords for iPhones and mini-USB, a USB adapter board and power points. Please note that devices are left at own risk. This area is marked with a sign that has a yellow battery on it.

If food and water bowls are required for service animals, please see staff.

Bookable Spaces and Items

The centre is available for casual hire outside of Open Access hours for a fee to community organisations (pending availability). Please note Youth ARC houses City of Hobart's youth programs and therefore, is not available for ongoing regular bookings.

Visit our website for bookings and hire both during the week and on weekends.

[Website bookings and hire page.](#)

PA System

Location - Above the stage, by front counter.

The PA system is available to hirer once a full face to face induction has been completed.

Inclusions:

- Microphone
- Speakers
- sound mixing desk.

Safety Information

Clear and accessible emergency evacuation routes.

In the event of an emergency, there are emergency lights, audible alarm sounds and visible alarms.

Staff trained in first aid.

Defibrillator located at front reception.

Sensory Guide

A sensory guide helps people understand what they might see, hear, or feel in a certain place. It is useful for people who are sensitive to sensory experiences, such as those with autism or sensory processing disorder. This guide can be helpful in dealing with new or challenging situations.

At a youth centre:

I might feel

Air conditioner

Change in ground surface

Fans

Heating

Shared personal space

Weather

I might hear

Background music

Computers and gaming consoles

Keyboard clicks

Heating/Cooling

Helicopter landing on nearby hospital roof

Musical instruments

People

Printer

Singing

I might see

Bright lights

Computer and gaming screens

Glare

I might smell

Bathroom smells

Food and drink

Glue and paint (art room)

For accessibility-related questions or concerns, contact Dougal McLauchlan, phone (03) 6238 2778, email youthartsrec@hobartcity.com.au

Designed and developed in collaboration with [Access Ability Australia](#) and Youth Arts and Recreation.